

Spire Mag™ Series MAG888-DC
Battery Powered Electromagnetic Flowmeter

User's Manual

MAG888-DC-QT-0915

Revised Dec., 2015

The following conventions are used through this manual:

WARNING!

Read the declaration carefully before starting any other action!

Local safety regulations must be applied!

CAUTION!

Attention! Damage might occur to the device if handled inappropriately.

For questions, please call us at +1 978 263 7100 or email us at Support@SpireMT.com.

CONTENT

1 BRIEF INTRODUCTION	1
2 CONVERTER PICTURE.....	1
3 DISPLAY AND OPERATION.....	2
FIG 3.3 MAG888-DC INFRARED REMOTE CONTROLLER DISPLAY AND OPERATION	3
3.1 METER MODE	4
3.2 METER WAKE-UP	4
3.3 SLEEP MODE SETTING	5
3.4 CHANGE BETWEEN MEASUREMENT MODE AND TEST MODE	5
3.4.1 Measurement Mode into Test Mode	5
3.4.2 Test Mode into Measurement Mode	5
<i>In Test Mode, please use the infrared remote controller aim at the “Infrared remote controller receiving window” on the converter, then press “Power key”. The meter will into Measurement mode.(In measurement mode, there’s battery symbol in the display).</i>	5
3.5 PARAMETER SETTING	6
3.5.1 Parameter Setting and Function Button Operation	6
3.5.2 Function Selection Display	6
3.6 GROSS ZERO CLEANING	7
4 CONVERTER WIRING.....	7
4.1 DEFINITION OF SIGNAL LINE	7
4.2 CONVERTER WATERPROOF INTERFACE DEFINITION AND WIRING	8
4.2.1 Converter Waterproof Interface Definition	8
4.2.2 Converter Pressure Measurement Interface and Pressure Sensor Wiring	9
4.3 CONVERTER ASSEMBLED GROUNDING REQUIREMENTS	9
4.4 FLOW TEST	10
4.4.1 Pulse Output Wiring	10
4.4.2 Pulse Output and Calibration System Connection	10
4.4.3 Pulse Output Parameter Setting	11
5 METER PARAMETER.....	11
5.1 MEASUREMENT MODE PARAMETER	12
5.1.1 Measurement Interval Time	12
5.1.2 Sleep Password	12
5.2 FLOW MEASUREMENT PARAMETER	12

5.2.1 Measuring Pipe Size	12
5.2.2 Flow Calculation Unit	12
5.2.3 Range Setting	12
5.2.4 Flow Direction Choosing	12
5.2.5 Flow Zero-point Correction	12
5.2.6 Small Signal Elimination Point	13
5.2.7 Measured Damping Time	13
5.2.8 Reverse Flow Measurement	13
5.2.9 Measured Flow Frequency Threshold	13
5.3 METER OUTPUT PARAMETER.....	13
5.3.1 Pulse Output Allowance	13
<i>If “Forbidden”, pulse output function in measurement mode is off. If “Allowance”, pulse output function in measurement mode is on.</i>	13
5.3.2 Output Pulse Unit	13
5.3.3 Output Pulse Equivalent	13
5.4 SENSOR PARAMETER.....	14
5.4.1 Sensor Coefficient	14
5.4.2 Excitation Mode Selection	14
5.4.3 Sensor Encoder	14
5.4.4 Empty Pipe Alarming Threshold	14
5.4.5 Empty Pipe Zero-point Correction	14
5.4.6 Full Pipe Zero-point Correction	14
5.5 FLOW CORRECTION PARAMETER.....	15
5.5.1 Flow Correction Allowance	15
5.5.2 Flow Correction Point 1-4	15
5.6 PRESSURE MEASUREMENT PARAMETER.....	15
5.6.1 Pressure Measurement Allowance	15
5.6.2 Pressure Zero-point and Full Scale Correction	15
5.6.3 Pressure Calculation Unit	15
5.6.4 Pressure Measurement Gain	15
5.7 COMMUNICATION PARAMETER.....	16
5.7.1 Communication Address	16
5.7.2 Communication Interval Time	16
5.8 TIME PARAMETER.....	16
5.9 FACTORY CALIBRATION PARAMETER.....	16
5.9.1 Language	16
5.9.2 Factory Calibration Coefficient	16
5.9.3 Factory Calibration Parameter	16
5.9.4 Converter Coder	16
5.10 FLOW GROSS PARAMETER.....	16

5.10.1 Flow Integrating Unit	16
5.10.2 Gross Cleaning Password	17
5.10.3 Forward and Reverse Gross High and Low Bit	17
6 PERFORMANCE INDICATORS	17
6.1 SENSOR MATCHING REQUIREMENTS	18
6.2 MOUNTING DRAWING	19
7 ALARMING INFORMATION	20
8 ERROR DISPOSITION	20
8.1 NO DISPLAY	20
8.2 EXCITATION MODE ALARMING.....	20
8.3 EMPTY PIPE ALARMING	20
8.4 FLOW MEASUREMENT INACCURATE	21
8.5 INFRARED REMOTE CONTROLLER KEY FAILURE	21
ANNEX 1 MAG888-DC PARAMETER SETTING OVERVIEW	22
ANNEX 2 FUNCTION OF NONLINEAR CORRECTION	23
ANNEX 3 MAG888-DC INFORMATION RECORD FUNCTION	24
ANNEX4 MAG888-DC WATERPROOF JOINT WIRING	25
ANNEX5 EXTERNAL POWER SUPPLY CONVERTER CONNECTION	26
ANNEX6 RS485 EXTERNAL POWER SUPPLY CONNECTION	27

1 Brief Introduction

MAG888-DC is a battery powered electromagnetic flowmeter. This electromagnetic converter is capable of being used together with common electromagnetic flow meter sensor, with the flow rate measurement accuracy up to 0.5 level. A new type of battery powered meter will be developed by connecting the MAG888-DC converter to a common electromagnetic flow meter.

The standard configuration of MAG888-DC battery powered electromagnetic converter has a lithium battery, which is capable of working 3 to 6 years consecutively. If a high-capacity battery is applied, the converter will have longer working time.

MAG888-DC battery powered electromagnetic converter has GPRS and CDMA wireless data transmission function, RS485/Modbus protocol (external power supply or battery-powered) communication function, and SRD mode wireless network communication system to realize data collection and management.

Stainless steel outer covering is applied to MAG888-DC battery powered electromagnetic converter to meet IP68-level seal protection requirement, which means the converter can be used in underground and other damp places.

2 Converter Picture



Fig.2.1 Integral picture



Fig.2.2 With GPRS Communication

3 Display and Operation

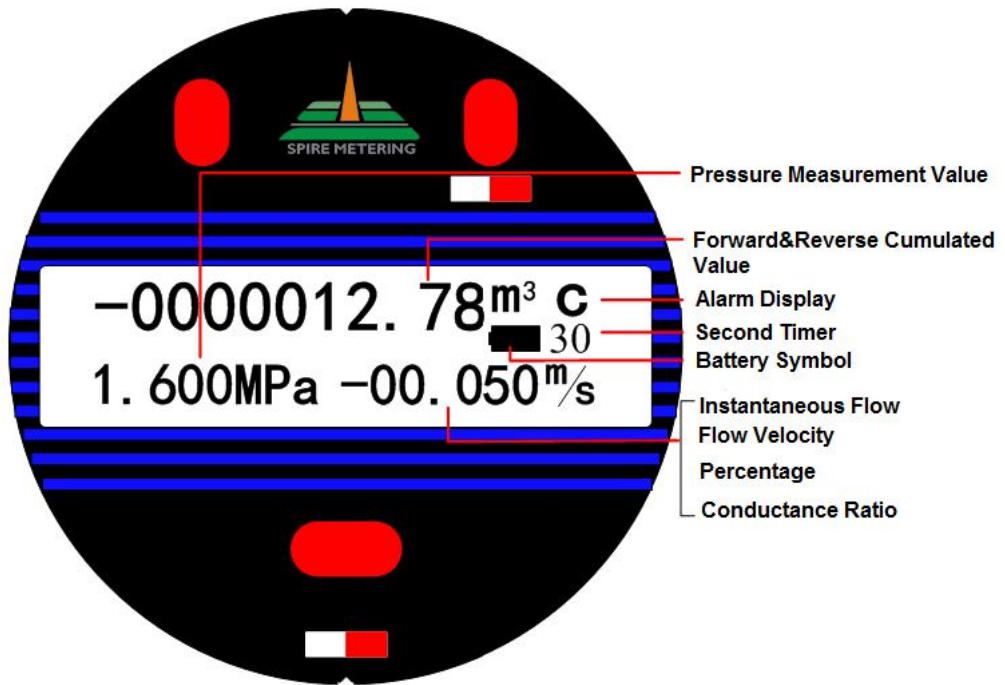


Fig. 3.1 Converter LCD

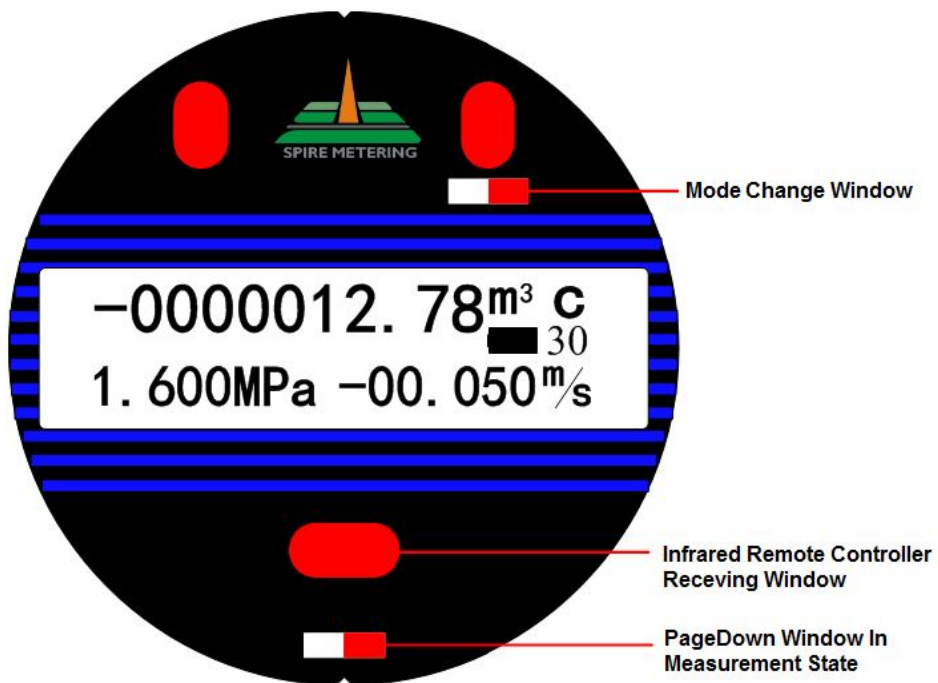


Fig. 3.2 MAG888-DC converter LCD and magnetic key operating position

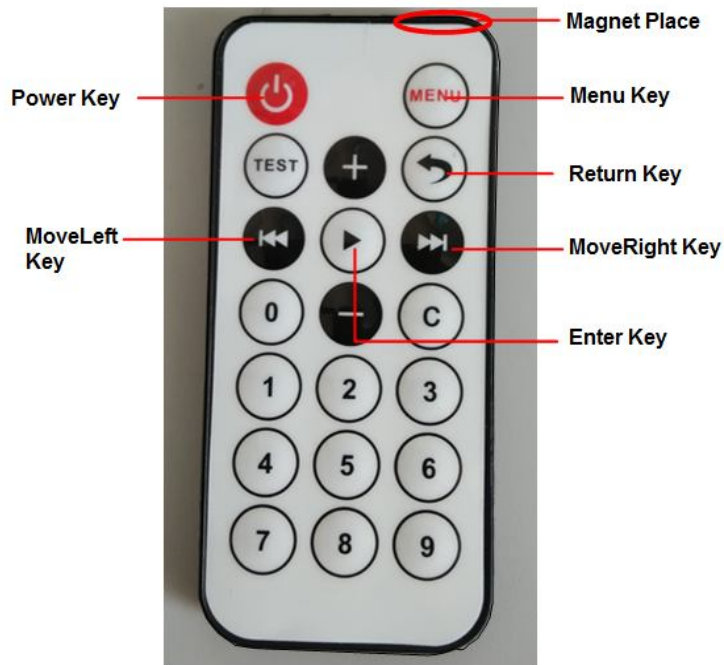


Fig 3.3 MAG888-DC Infrared remote controller display and operation

Power Key—Testing Mode change to Measurement mode

Menu Key--Testing Mode enter into parameter setting

Enter Key-- Enter into different menu in parameter setting

Return Key--back to previous menu in parameter setting

Move Left Key--move the cursor to left Move Right Key--move the cursor to the right



Attention Please:

There should be a button cell in the infrared remote controller.

But the button cell sometimes may not inside because of international transportation regulation.

Button cell specification: 3V/Lithium Battery/CR2025

Following picture is for your reference:





Before using the meter, Please read below 3.1 3.2 3.3 3.4 carefully.

3.1 Meter Mode

Test mode: When MAG888-DC was powered on, Converter to electricity, instrument into test mode (LCD middle row no battery symbol on the right side), and the converter can output pulse signals to complete the machine calibration or change the converter parameters. After entering the meter calibration mode, without any operation, 3 minutes automatically transferred into the measurement model. If there are any operation, stop the operation to maintain after 3 hour examining mode, and then transferred into measuring instrument automatic mode.

Measurement mode: measurement mode is applied when the converter is powered on or in use (in measurement mode, there's a battery symbol on the display). Under measurement mode, meter can complete flow, velocity and empty pipe parameter measurement and conduct RS485 or GRPR communication via infrared transmission.

Sleep mode: Since the meter is factory sealed, it is not convenient to open it, and the meter power switch is turned on when the meter leaves the factory. To save power during the meter transportation, the meter is set to sleep mode. When the meter is in sleep mode, there is no output display and power is saved. So before using the meter, the user needs to wake the meter up on basis of the method from 3.2. What's more, the meter will turn on the sleep mode automatically when the meter stay in the conditions of empty pipe or the signal wire hung in the air. At this time, there is no output and display, either. But the user need not to wake-up the meter, it will turn to the measure mode automatically when the meter detects the normal flow or full pipe.

3.2 Meter Wake-up

When user need to wake up the flow meter, please press "menu" button on the remote and then enter the "parameters set" by password "19818". Use the MAG888-DC infrared remote controller to change the meter sleep password "23130" in "meter dormant" of "operate mode" to be 00000 then go back to measurement mode (there's battery symbol on LCD display).

Note: When meter in sleep mode, the timer inside doesn't work. Please reset the timer parameter if user wakes up the flow meter.

3.3 Sleep Mode Setting

If the user wants to set the flow meter back to sleep mode, please use the infrared remote controller in menu "measurement mode parameter" submenu "meter sleep password", and change the password to be "23130" then the meter goes back to the test mode (there's no battery symbol on the LCD). Press the "Power Key" of the remote, and the meter will be in sleep mode.

3.4 Change between Measurement Mode and Test Mode

3.4.1 Measurement Mode into Test Mode

In measurement mode, please use the infrared remote controller, make the "magnet place on the controller" aim at the "mode change window on the converter" and use the infrared remote controller row on it lightly. Then the meter will into Test mode. (In Test mode, there's no battery symbol on the display and the second timer accumulates once around 1S).

3.4.2 Test Mode into Measurement Mode

In Test Mode, please use the infrared remote controller aim at the "Infrared remote controller receiving window" on the converter, then press "Power key". The meter will into Measurement mode. (In measurement mode, there's battery symbol in the display).



In order to save battery life, flow meter will be set in sleep mode when ex-factory. In sleep mode, the display is powered off.

Before using it, user need to use the infrared remote controller to wake up the meter first, then come to work.(please refer to 3.2 above).When use it, user need to change the "meter sleep password" to other password instead of sleep password, then set the time parameter.

2. When the meter was waked up, it will enter into test mode first. If user needs to change parameters, please change in test mode. If user needs to do measurement or communication, must enter into measurement mode. (Please refer to 3.4 about how to

change test mode to measurement mode).

3.5 Parameter Setting

3.5.1 Parameter Setting and Function Button Operation

If parameter setting or modify is applied, make sure the meter is under test mode and enter into parameter setting. In the test mode, press “Menu Key” to enter “Meter Parameter Setting” function, and then press “Enter Key” enter into input password interface “00000”. Input the password, then press “Enter Key”, enter into main menu, if want to change main menu, just press “+” or “-” is ok.

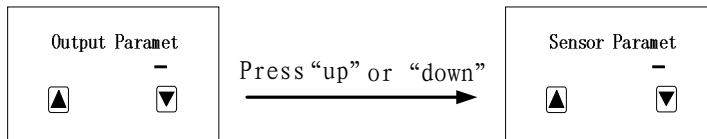


Fig. 3.4

If need to enter main menu to change submenu parameters, press “Enter Key”. If need to back to previous menu or test mode, then press “Back Key” is ok.

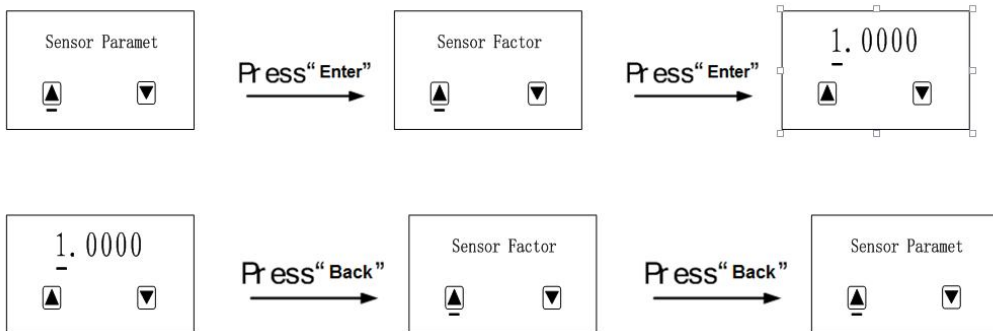


Fig. 3.5

3.5.2 Function Selection Display

Press “Menu Key” to enter into function selection display, and press “+” to select. There are three functions to select:

Table 3.1

Parameter Number	Function	Comments
1	Meter Parameter Setting	Select the function to enter parameter setting
2	Gross Record Cleaning	Select the function to clear gross record

3	Monthly Gross Record	Select the function to record gross of 32 months Record forward and reverse flow separately
---	----------------------	--

Meter parameter set or modify must be done in test mode. The following steps need to follow to enter parameter setting status by press buttons on the operating panel.

3.6 Gross Zero Cleaning

Step 1: Follow “3.5 Parameter Setting” to set “Gross Zero Password” and back to test mode.

Step 2: In test mode, press “menu key”. (5s later, “Meter Parameter Setting” is displayed.)

Steps 3: Press “+”, “Gross Zero Cleaning” is displayed.

Steps 4: Press “Enter Key”, input the password set in step 1 and press “Enter Key”, the meter displays “00000”, gross zero cleaning is done.

Step 5: Press “Back Key”, meter is back to test mode.

4 Converter Wiring

4.1 Definition of Signal Line

MAG888-DC battery powered converter has two groups of wiring: signal line group and excitation line group. Two groups are connected to different sensors separately. Pay attention to avoid any possible damage to meters because of incorrect wiring.

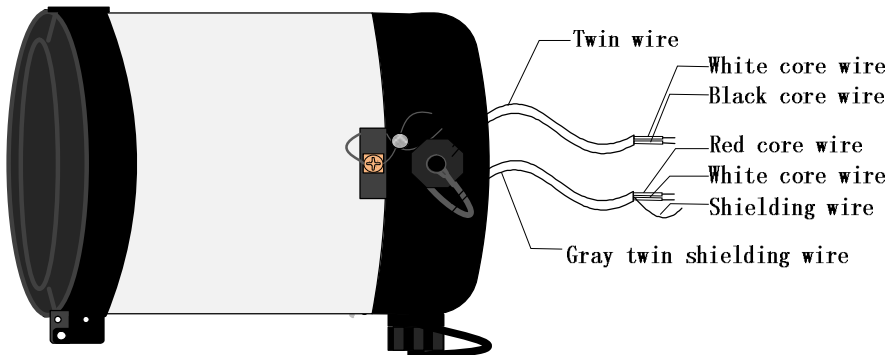


Fig. 4.1 MAG888-DC Signal Line

Signal lines are signed as follows :

- | | | |
|---------------------------|-----------------|--|
| Black twin plastic wire: | White core wire | Connect with exciting current |
| | Black core wire | Connect with exciting current |
| Gray twin shielding wire: | | Connect the red core wire to "signal 1" |
| | | Connect the white core wire to "signal 2" |
| | | Connect the shield wire to "signal ground" |

4.2 Converter Waterproof Interface Definition and Wiring

4.2.1 Converter Waterproof Interface Definition

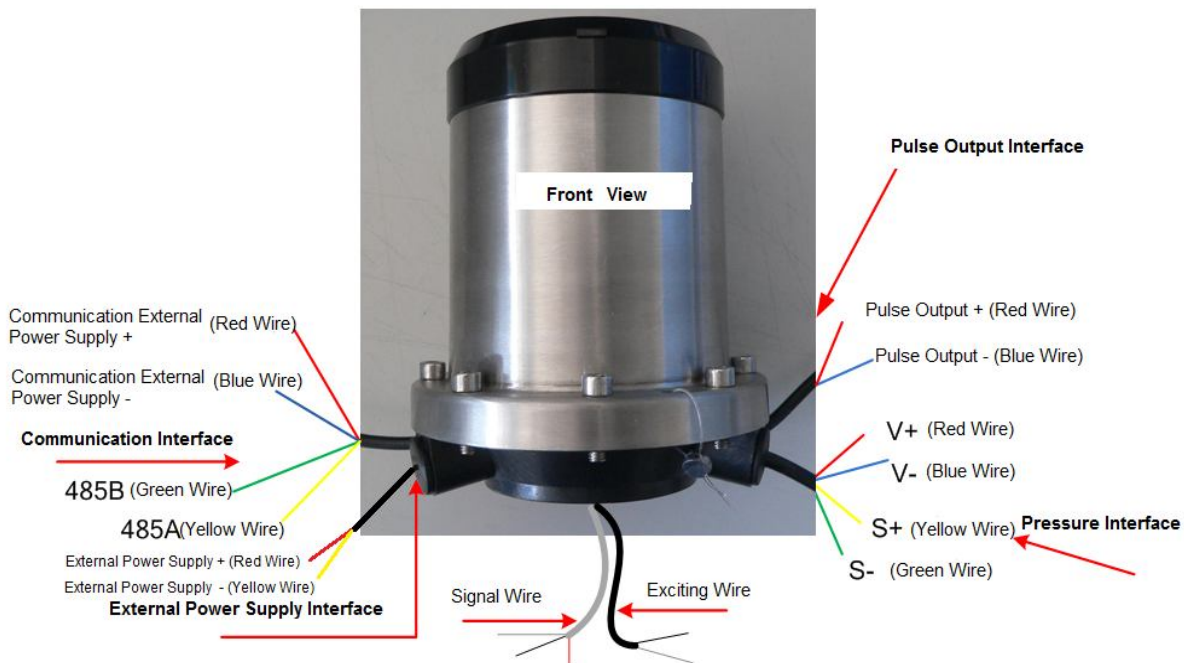


Fig. 4.2a MAG888-DC Converter Waterproof Interface Definition

485 Communication Interface (4 Core wire):

- Red Wire- External Power Supply + (DC3.6V)
- Blue Wire (or other color wire)-External Power Supply -
- Yellow Wire-485A
- Green Wire-485B

Pressure Measurement Interface (4 Core Wire):

- Red Wire-Power Supply +
- Blue Wire (or other color)-Power Supply-
- Yellow Wire-Pressure Signal +
- Green Wire-Pressure Signal -

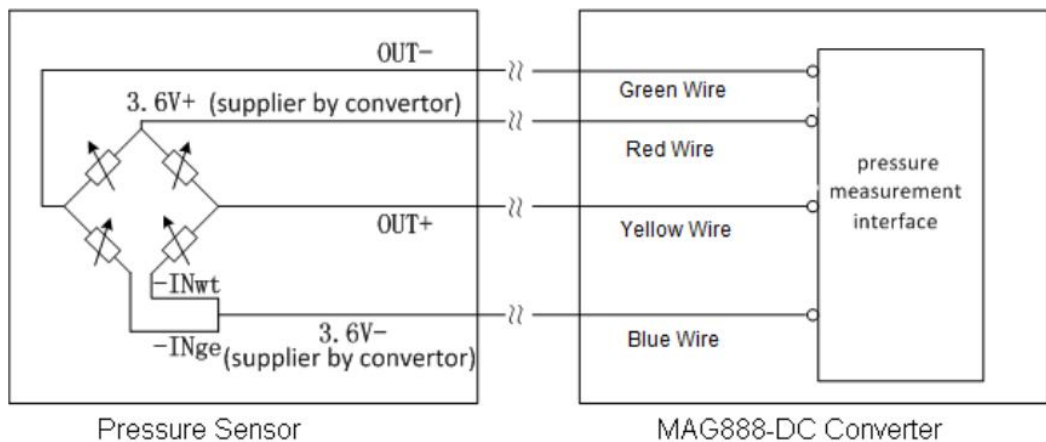
External Power Supply Interface (2 Core Wire):

- Red Wire-Power Supply +
- Yellow Wire (or other color)-Power Supply -

Pulse Output Interface (2-Core Wire):

- Red Wire-Power Supply +
- Blue Wire (or other color)-Power Supply -

4.2.2 Converter Pressure Measurement Interface and Pressure Sensor Wiring



4.3 Converter Assembled Grounding Requirements

First, use $\Phi 20$ copper, cut to 1700mm long (can be extended if necessary) to make ground nail buried 1500mm (Note: When buried nails, nail tips in spreading a layer of wood chips carbon, then pour brine)

Second, solder 4mm² copper wires to the ground nail, and finally ground to the sensor flange, grounding rings, pipe flanges, refer to Fig. 4.3.

Note: stainless steel is required to fixed ground screw, spring washer, and flat washer.

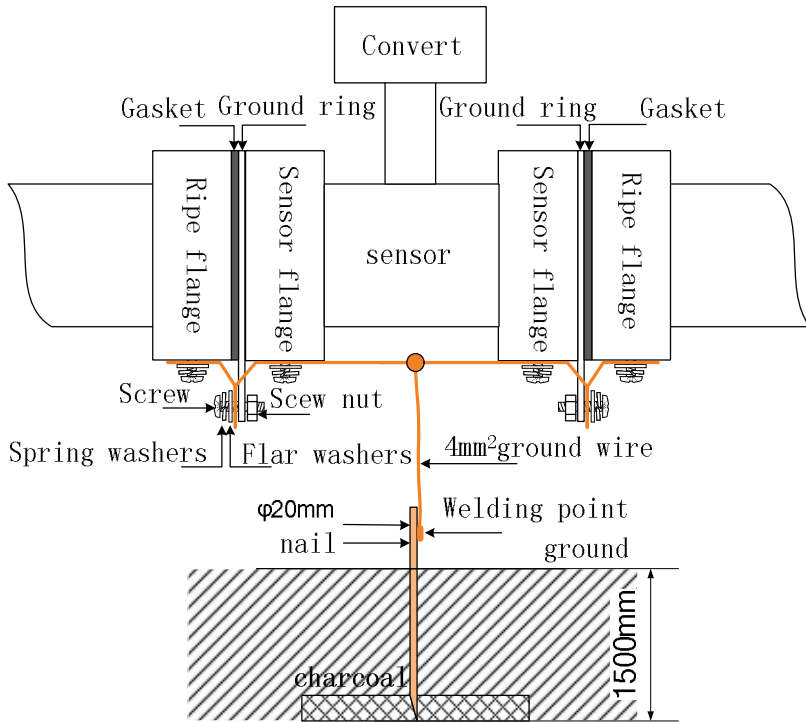


Fig. 4.3 Converter Grounding Schematic

4.4 Flow Test

4.4.1 Pulse Output Wiring

For the flow test, MAG888-DC has pulse output signal to output pulse per unit volume. In order to ensure good seal, the pulse output interface is designed to infrared transmit. When use it, please follow below wiring steps:

Pulse output signal works in test mode and measurement mode, but pulse output line is different. (Please refer to Fig.4.2a)

4.4.2 Pulse Output and Calibration System Connection

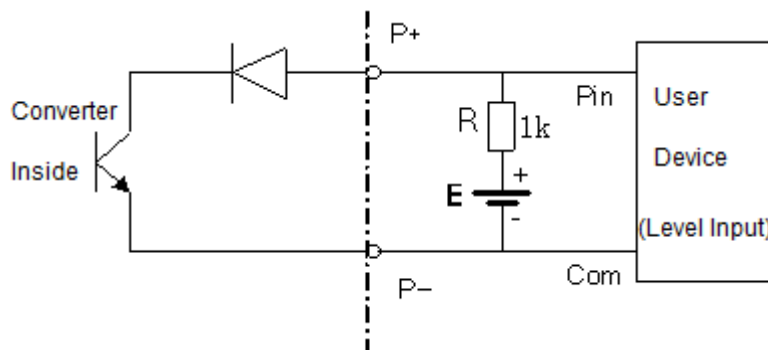
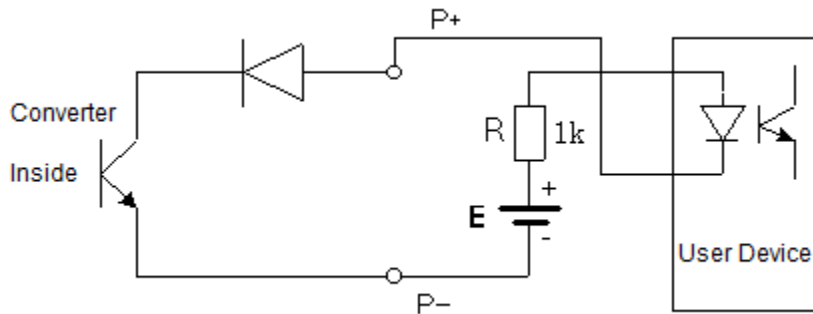


Fig 4.2.1 Digital Output Connection Level



Digital Level Output Photoelectric Coupler (e.g. PLC etc.)

Fig.4.4.2 Pulse and Calibration System Connection

4.4.3 Pulse Output Parameter Setting

- The maximum measurement pulse output rate is 1000Hz, pulse width is 1mS. When doing meter test, pulse output equivalent is used to set the pulse output rate. The maximum pulse output should be less than 1000HZ to avoid over limit, resulting in calibration error
- For example, use DN800 flow meter, when the flow rate is 10m/s, the flow is 18095m³/h. If the pulse output equivalent is 7.5L, there are 670.2 pulses output per second.
- Pulse output rate should not be selected too high to avoid approaching the upper limit of the output rate, causing the output pulse loss and affecting the accuracy of the instrument calibration.
- To avoid counting synchronization error between calibration system and calibrated meter, MAG888-DC battery powered converter requires calibration count each time is longer than 4 minutes.

5 Meter Parameter

The parameters of MAG888-DC battery powered converter are: measurement mode parameter, flow measurement parameter, meter output parameter, sensor parameter, flow correction parameter, pressure measurement parameter, communication parameter, time parameter, factory calibration parameter and flow gross parameter. The definitions of the parameters are as below:

5.1 Measurement Mode Parameter

5.1.1 Measurement Interval Time

In the measurement mode, meter measurement interval time can be set from 3 seconds to 30 seconds (meter factory defaults settings is 15 seconds. If meter work for 20minutes late, meter setting will automatically become 15S, this is no relationship with the setting interval time).

5.1.2 Sleep Password

When the sleep password is “23130”, the instrument will start the sleep mode.

5.2 Flow Measurement Parameter

5.2.1 Measuring Pipe Size

Sensor pipe size scope of MAG888-DC battery powered electromagnetic converter is 10 to 2000 mm.

10,15,20,25,32,40,50,65,80,100,125,150,200,250,300,350,400,450,500,600,700,800....2000

5.2.2 Flow Calculation Unit

Flow Calculation Units are L/h, L/m, L/s, m³/h, m³/m, m³/s, ukg/h, ukg/m, ukg/s, usg/h, usg/m, usg/s. User can select the unit according to actual status.

5.2.3 Range Setting

Flow range setting means upper limit flow value setting, and lower limit flow value is set “0” automatically.

5.2.4 Flow Direction Choosing

When doing debugging, if the flow direction is not consistent, users do not have to change the excitation line or signal line connection, and just reset the flow direction parameters.

5.2.5 Flow Zero-point Correction

Make sure the sensor is full and the fluid is in stationary state when doing the flow zero-point correction. Flow zero-point is shown as velocity of flow, mm/s. Zero-point correction displayed as below:

±	0	0	0	0
ZR = +	0	0	0	0

Upper large characters: corrected flow zero-point.

Lower small characters: ZR means measured zero-point;

When ZR display is not “0”, do correction to make ZR display to “0”. Note: if correct upper line character and ZR increases, change the “+,-” in lower line to make sure ZR display to be

zero.

The corrected flow zero-point is the compound value of sensor, and shall be recorded in sensor list and label. The unit is mm/s, and the sign is in opposite with corrected value.

5.2.6 Small Signal Elimination Point

Small signal elimination point setting is showed by flow. When applied small signal elimination, the flow, gross, pulse output are also eliminated, only the velocity of flow is displayed.

5.2.7 Measured Damping Time

Long measured damping time can enhance the stability of flow display and output digital, and is applicable for cumulative add up of pulse flow. Short measured damping time means quick respond to measurement, and always apply in production control. Measured damping time setting is by choosing. (Damping time can only be applied in test mode.)

5.2.8 Reverse Flow Measurement

MAG888-DC converter has reverse flow output disable function, when "Forbidden", no output display of the flow, pulse and accumulated gross, only the flow rate display; When the "Allowance", converter works properly.

5.2.9 Measured Flow Frequency Threshold

In the measurement mode, in order to fast-track measure upheaval flow meter to determine the flow rate change, when the flow rate change is greater than measured flow frequency threshold, the instrument starts fast tracking measurements to ensure the accuracy of the measurement. When the flow rate change is less than measured flow frequency threshold, the meter measures by measurement time interval.

5.3 Meter Output Parameter

5.3.1 Pulse Output Allowance

If "Forbidden", pulse output function in measurement mode is off. If "Allowance", pulse output function in measurement mode is on.

5.3.2 Output Pulse Unit

There are four output pulse units: m³, L, ukg, usg.

5.3.3 Output Pulse Equivalent

Pulse coefficient is pulse equivalent, and the range is from 0.001 to 59.999. Output pulse equivalent unit is in consistence with the selected pulse output type, and used to measure pulse output.

5.4 Sensor Parameter

5.4.1 Sensor Coefficient

Sensor coefficient is electromagnetic flow meter calibration coefficient. The coefficient obtained from the actual calibration, and stenciled onto the sensor plate. Users shall input the coefficient factor into MAG888-DC converter parameter table.

5.4.2 Excitation Mode Selection

There are three excitation modes to select: 4.63Hz/s (mode 1), 3.90Hz/s (mode 2).

Small diameter sensor excitation system exciting small caliber, 4.63Hz/s should be selected.

Large diameter sensor excitation system exciting large caliber, 3.90Hz/s should be selected.

In use, first select excitation mode 1, if the meter displays flow rate zero is too high or SYS, then select mode 2. Note: excitation mode shall be in consistent with calibration mode.

5.4.3 Sensor Encoder

Sensor encoder is used by the factory to record the sensor.

5.4.4 Empty Pipe Alarming Threshold

MAG888-DC measures the resistance between the two electrodes of the sensor to determine whether the pipe is empty. In the measurement mode, when the pipe is full, observe the fluid measured resistance value (R%), then take 1.5 to 2 times of the measured values to set the empty pipe alarm threshold . When the pipe is empty, the resistance between the electrodes increases, if the threshold is exceeded, empty pipe alarming is triggered.

5.4.5 Empty Pipe Zero-point Correction

User can do empty pipe zero-point correction. When doing the calibration, make sure the sensor is full. Empty pipe zero-point correction displayed as below:

0	0	0	0	0
MZ =	+0	0	0	15

Upper large characters: calibrated empty pipe zero-point.

Lower small characters: MZ means measured zero-point;

According to the actual measured conductivity R%, do correction to make MZ=5 – 10.

Note: if increase upper line character and MZ decreases.

5.4.6 Full Pipe Zero-point Correction

User can do full pipe zero-point correction when the conductivity R% is small. When doing the calibration, make sure the senior is empty. Full pipe zero-point correction displayed as below:

1	0	0	0	0
MR =	0	0	1	0 7

Upper large characters: calibrated full pipe zero-point.

Lower small characters: MR means measured zero-point;

Increase upper line character and MR decreases. Decrease upper line character and MR increases. User can correct MR to proper value based on actual needs (it is suggested that MR is around 100), the conductivity obtained in empty pipe is actual corrected MR.

5.5 Flow Correction Parameter

5.5.1 Flow Correction Allowance

The parameter is used to select whether meter linear correction will do. If “Forbidden”, correction will not do; if “Allowance”, correction will do.

5.5.2 Flow Correction Point 1-4

Details refer to Annex 2.

5.6 Pressure Measurement Parameter

5.6.1 Pressure Measurement Allowance

The parameter is used to select whether the pressure measure will do. If “Forbidden”, measurement will not do; if “Allowance”, measurement will do.

5.6.2 Pressure Zero-point and Full Scale Correction

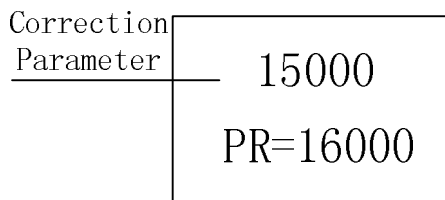
Pressure correction method: First according to defined interface, connect pressure sensor with converter. Adjust pressure sensor to zero, correct pressure zero PZ to 0, and then adjust pressure sensor to the full-scale, correct pressure full-scale PR to full scale value.

5.6.3 Pressure Calculation Unit

1.000Kpa, 10.00Kpa, 100.0Kpa, 1.000 MPa, 10.00 MPa, 100.0 MPa

5.6.4 Pressure Measurement Gain

When the pressure coefficient value of full-scale correction is more than 20000, it is indicating that the pressure sensor signal is too small, and the pressure measurement gain should be increase one level.



5.7 Communication Parameter

5.7.1 Communication Address

Communication address means address range when doing data communication. The address range is from 01 to 99 and address 0 is reserved.

5.7.2 Communication Interval Time

Communication interval time is used to send data to communication terminal, set range: 01 ~ 59999S. The interval time is shorter, the greater the meter communication modules power consumption and the faster the data updates. The factory default time interval is 60S, users can change according to the actual needs.

5.8 Time Parameter

Time parameter is used to set Year, Month, Day, Hour, Minutes and Second. Time parameter is used in Day and Month gross records.

5.9 Factory Calibration Parameter

5.9.1 Language

English

5.9.2 Factory Calibration Coefficient

Factory calibration coefficient the special coefficient of sensor-made-factory and the factory use this coefficient to unite MAG888-DC converters to make sure all the Meters can interchange by 0.1%.

5.9.3 Factory Calibration Parameter

Used by the factory.

5.9.4 Converter Coder

Converter coder records the time the converter leaves the factory and the number.

5.10 Flow Gross Parameter

5.10.1 Flow Integrating Unit

9 bit calculator is applied and the upper limit is 999999999.

Flow Integrating Units are:

0.001L, 0.010L, 0.100L, 1.000L, 0.001m³, 0.010m³, 0.100m³ and 1.000m³.

0.001ukg, 0.010ukg, 0.100ukg, 1.000ukg, 0.001usg, 0.010usg, 0.100usg, 1.000usg.

5.10.2 Gross Cleaning Password

User can use upper level password to set gross cleaning password. Enter function selection menu, press the page key to enter into gross cleaning menu to set the gross cleaning password, and complete the gross cleaning.

5.10.3 Forward and Reverse Gross High and Low Bit

Gross high and low bit setting can change the flow gross value which is used in meter maintenance and replacement. User use third level password to change the flow gross value and generally cannot exceed the maximum value of counter (999999999).

6 Performance Indicators

- Environmental Temperature:-20℃-- 50℃
- Relative Humidity: $\leq 95\%$
- Outer Covering Protection Level: IP68
- Flow Speed Measurement Range :0-15m/s
- Conductivity: Clean water $>20 \mu\text{s}/\text{cm}$
- Measuring Diameter: DN10---DN800
- Matching Accuracy Class: 0.5
- Measurement Parameter: instantaneous flow, instantaneous flow rate
- Record Parameter: accumulated gross Flow
- Detection and Alarm Parameters: Fluid empty pipe detection alarm, excitation current detection alarm
- Scaled Output Signal: Unit volume flow pulse
- Communication Mode: RS485 (Modbus protocol), GPRS
- Battery Working Time

Table 6.1.1 Corresponding Table of Battery life and Interval Measurement Time
(Excitation Mode 1)

Cycle Measuring Time	50mA Excitation Use Time	20mA Excitation Use Time
30S	120 months	200 months
15S	60 months	100 months
14S	56 months	93 months
13S	52 months	86 months
12S	48 months	79 months
11S	44 months	73 months
10S	40 months	66 months
9S	36 months	59 months
8S	32 months	53 months
7S	28 months	46 months

6S	24 months	39 months
5S	20 months	33 months
4S	16 months	26 months
3S	12 months	19 months

Table 6.1.2 Battery Life Coefficient Corresponding Excitation Mode

Excitation Mode	Mode 1	Mode 2
Battery Life Coefficient	1.0	0.85

When the sensor has large diameter, the corresponding excitation cycle is long (see excitation mode parameter), therefore there is more power consumption.

6.1 Sensor Matching Requirements

- For 20mA excitation, sensor excitation coil resistance: 70 to 110 Ω (two coils in series) (recommended)
- For 35mA excitation, sensor excitation coil resistance: 50 to 70 Ω (two coils in series)
- For 50mA excitation, sensor excitation coil resistance: 40 to 50 Ω (two coils in series)
- Sensor flow signal strength: 50 to 100 mV (1m/s)

Note: Special note is necessary to order excitation coil resistance

Note: When doing the flow correction, if corrected sensor coefficient is around 1.0000, it is indicating that the flow sensor signal strength meets the requirements. If corrected sensor coefficient is greater than 1.0000, it is indicating that flow sensor is with low sensitivity. If corrected sensor coefficient is less than 1.0000, it is indicating that the flow sensor is with high sensitivity. If flow sensor with high sensitivity, stability and conducive of the flow meter measurement accuracy is better.

Generally, MAG888-DC converter can achieve good matching if ordinary sensor of 250mA excitation converter produced by our company is equipped and correction coefficient is less than 1.0000.

6.2 Mounting Drawing

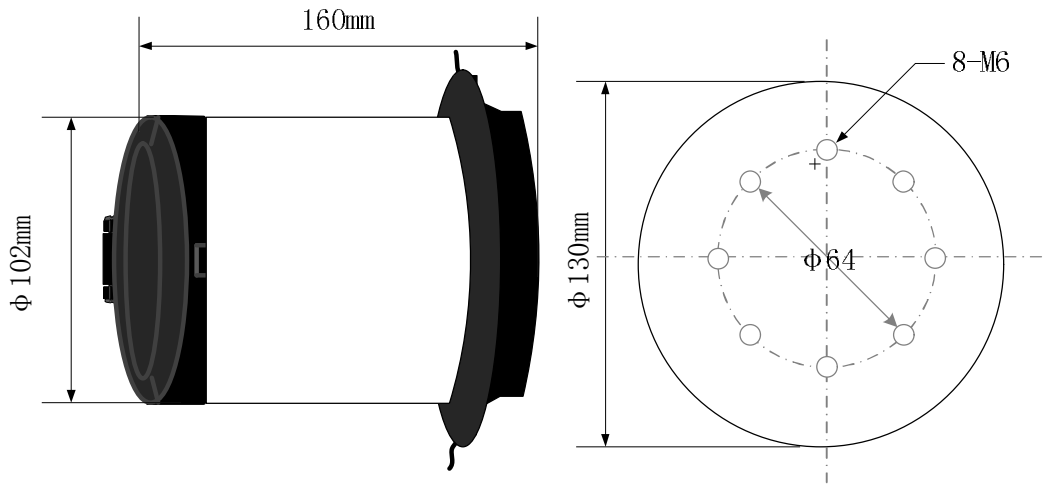


Fig. 6.2 Mounting Drawing

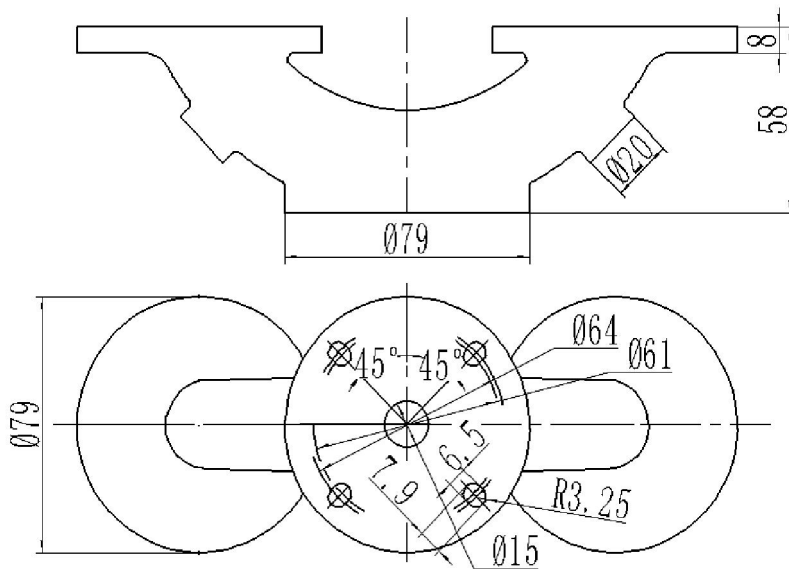


Fig.6.2.2 Integral Flange Mounting Dimension

7 Alarming Information

There are three kinds of alarming information: S—system alarming, M—empty pipe alarming, C—small signal cut alarming. If S displays, it is possible that converter exciting breaks or converter excitation frequency mode selection inappropriate.

8 Error Disposition

8.1 No Display

- * Check whether the power is on
- * Check whether the power fuse is in good condition
- * Check whether the power voltage meets the requirement

8.2 Excitation Mode Alarming

- * Check whether excitation wiring EX1 and EX2 is open circuit
- * Check whether the total sensor excitation coil resistance is less than 150Ω
- * If the items above are in normal, then the converter is malfunctioned

8.3 Empty Pipe Alarming

- * Check whether the fluid is full of the senior pipe
- * Connect SIG1, SIG2 and SIGGND to short circuit, if the empty pipe alarming “Empty Pipe” disappeared, the meter is in normal condition; otherwise, the error may be caused low fluid conductance, wrong setting of empty pipe threshold or range.
- * Check whether the signal wiring is correct
- * Check whether the senior pole is in normal condition

If the flow is zero, the displayed conductance ratio shall be less than 100%

If there is liquid in pipe, the resistance between SIG, SIG2 and SIGGND shall be less than $50k\Omega$. (If the medium is water, it is better to use pointer multimeter to do the test and there is charge and discharge during the testing.)

- * The DC voltage between DS1 and DS2 shall be less than 1V, otherwise, it means the sensor pipe pole is polluted and cleaning is needed.

8.4 Flow Measurement Inaccurate

- * Check whether the liquid is full of sensor pipe
- * Check whether the signal cable is in normal condition
- * Check the sensor parameter and zero-point is set by sensor label or factory calibration

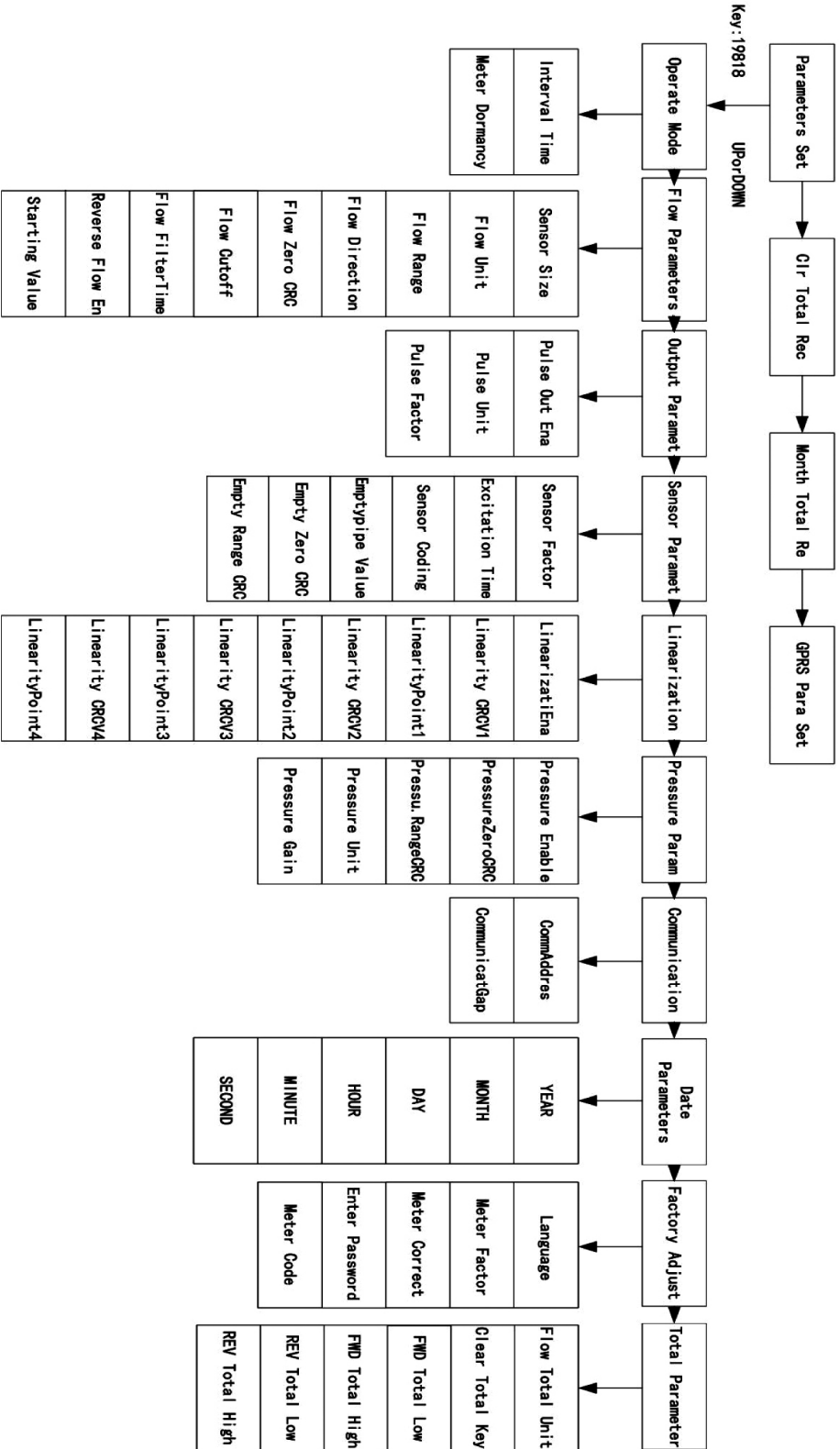
8.5 Infrared Remote Controller Key Failure

If the buttons are unresponsive when aligned remote controller to infrared tube, the power button battery insides may be low. Then can open the back of the remote controller and test the battery voltage. If the value is lower than 2.7V, the remote controller cannot work properly. Then button battery needs to be replaced.

Solemnly declare: the manual is applied to common software and if the content is not in consistent with the converter, refer to the actual product.

Dec., 2015

Annex 1 MAG888-DC Parameter Setting Overview



Annex 2 Function of Nonlinear Correction

MAG888-DC electromagnetic flow meter converter updates new nonlinear correction function. New calculation method is more convenience and nonlinear correction is accurate.

Parameter Definition:

Q_{pn} --Original flow of the selected correction point (Correction Point: Q_{p1} -- Q_{p9})

Q_{cn} --Corrected flow user want after correction (Correction Factor: Q_{c1} -- Q_{c9})

MAG888-DC design 9 flow correction points and 8 flow correction factors. The 9th flow correction point is the 9th flow correction factor. The corresponding relationship is as below:

Flow Correction Point1--Flow Correction Factor1

Flow Correction Point2--Flow Correction Factor2

Flow Correction Point3--Flow Correction Factor3

Flow Correction Point4--Flow Correction Factor4

Flow Correction Point5--Flow Correction Factor5

And so on...

User need to set the flow from low flow correction point to big flow correction point. As below:

Flow Correction Point9 > Flow Correction Point8 > Flow Correction Point7 > Flow Correction Point6 > Flow Correction Point5 > Flow Correction Point4 > Flow Correction Point3 > Flow Correction Point2 > Flow Correction Point1 > 0

Flow Correction Formula:

$$K = \frac{Q_{c1}}{Q_{p1}} + \frac{Q_x - Q_{p1}}{Q_{p2} - Q_{p1}} \times \left(\frac{Q_{c2}}{Q_{p2}} - \frac{Q_{c1}}{Q_{p1}} \right)$$

$$Q_{cx} = K \times Q_x$$

Q_{cx} ----Corrected Flow After Correction

Qx----Original Flow Before Correction

K----intermediate variable

Noted:

If user only needs to change part of the flow correction point, user can set all the other flow correction points and factors as the maximum point flow.

For example, when user only needs to change from Flow Correction Point 1 ---Point 5. Then User can set other Point 6=Factor 6=Point 7=Factor 7=Point 8=Factor 8=Point 9.

Annex 3 MAG888-DC Information Record Function

MAG888-DC has data retention memory inside for record-keeping various types of data.

Date Recorded in MAG888-DC

Date	Date Format	Record Method	Record Length	Remark
accumulated Gross	9 bit decimal	permanent record	8 byte	
Monthly Gross	Date + Gross	cycle record	32 groups	record 32 months

Note: the information record function of MAG888-DC refers to Meter.

Cycle record:

New records overwrite the oldest records, record keeping N group. For example, 32 groups monthly gross means a monthly gross record of last month overwrites the record of 32 months ago (two and a half years of records are keeping).

Record View Method:

1. View the record on meter through infrared remote controller key.
2. Through RS485 to use PC MAG888-DC_485 software to view the monthly gross record.

Note:

1. When meter in sleep mode, the time inside doesn't work. If user need monthly gross, please set the time first and then please do not set the meter in sleep mode again.
2. After replacing the meter battery, it will automatically record a monthly gross record and

the date is January 1, 2000. The accumulated value is the value of the point of battery replacement. This record is only used as a marker to replace the battery, and does not record the actual monthly gross.

Annex4 MAG888-DC Waterproof Joint Wiring

When user needs to make the wire come from water joint longer, user can use the terminal block and waterproof joint to make connection as below:

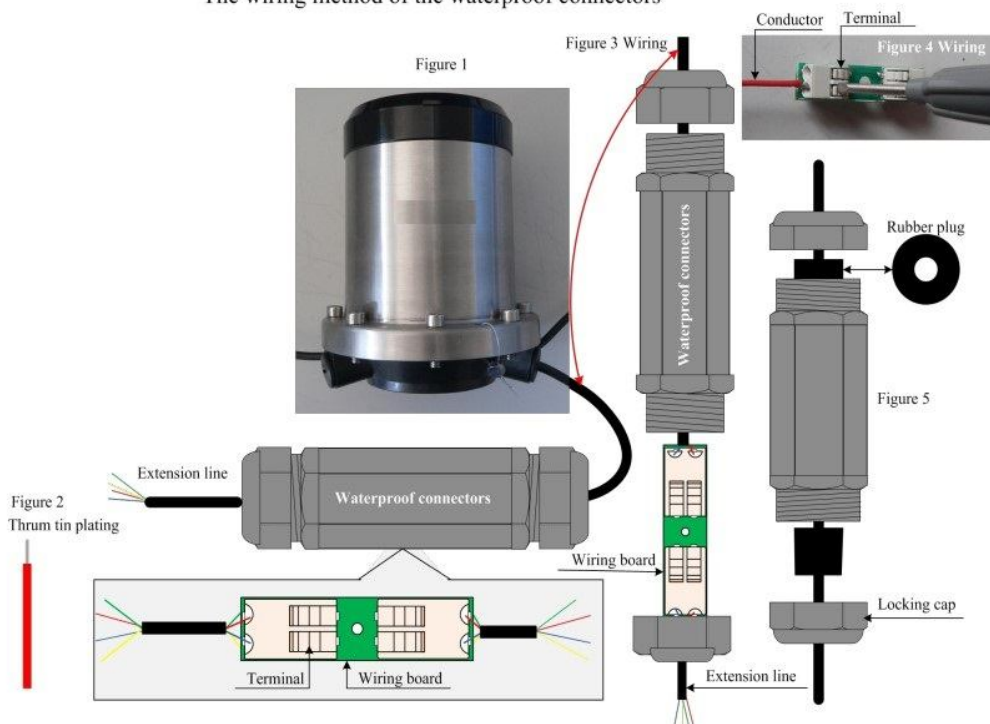
Step1: Make both ends of the wire come from the converter and the extension wire tin-plating.

Step2: Please check below Fig.3. Make the wire pass through the waterproof joint locking cap and rubber clog, and then connect to the terminal block.

Step3: After connecting both sides to the terminal block, put the terminal block into the waterproof joint.

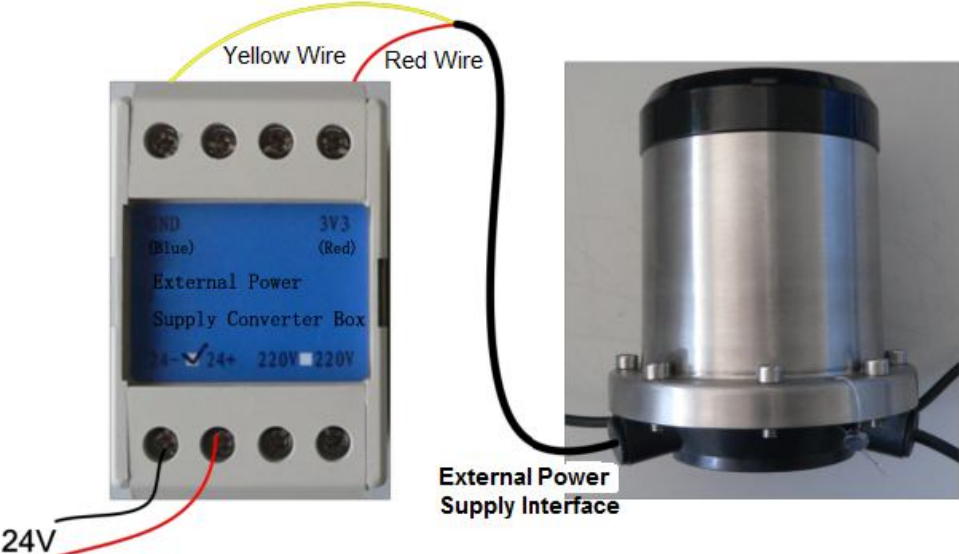
Step4: Make the locking cap of the waterproof joint tightly.

The wiring method of the waterproof connectors

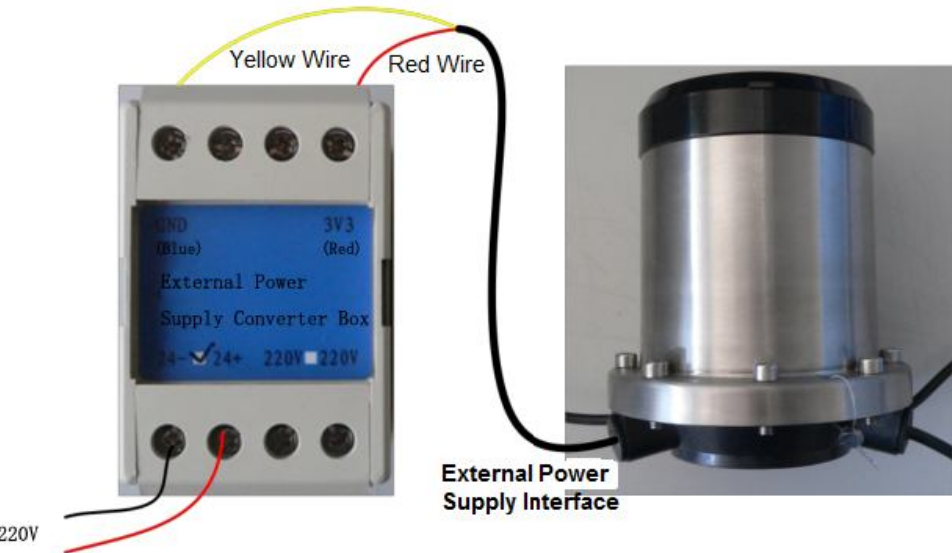


Annex5 External Power Supply Converter Connection

1. 24V DC External Power Supply Converter Box Connection

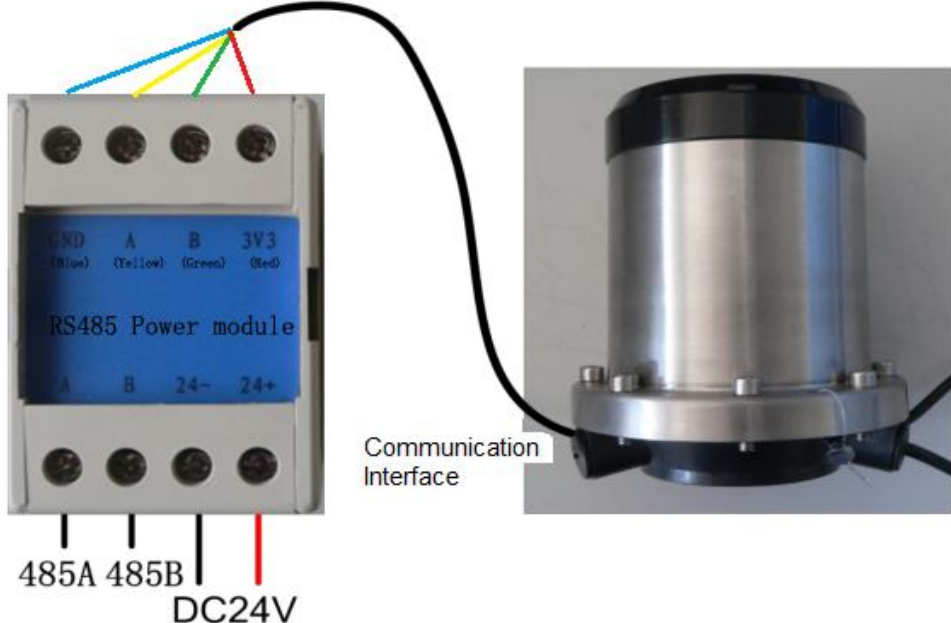


2. 220VAC External Power Supply Converter Box Connection



Annex6 RS485 External Power Supply Connection

1. 24V RS485 Module Connection



2. 220V RS485 Module Connection

